



**HUDSON HOME
BUILDERS**

3549 MEMBERS CLUB BLVD

\$649,000

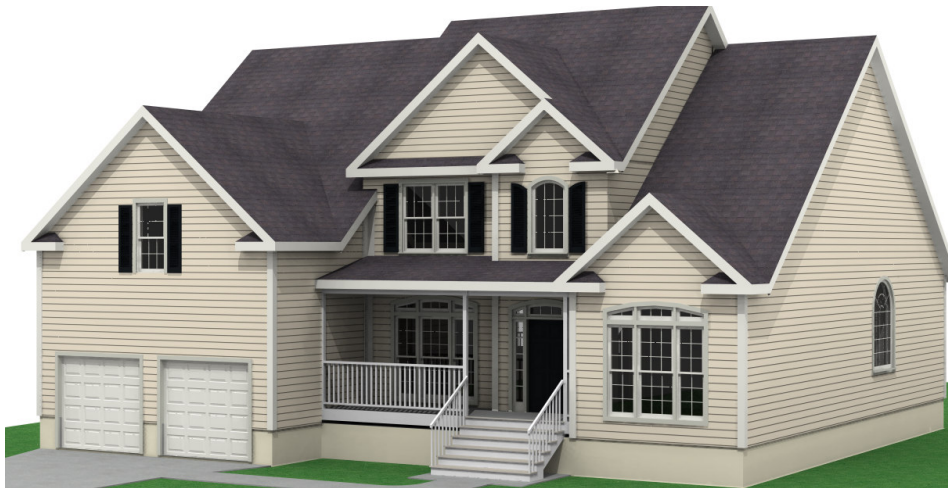
Situated on #5 Members

Maximum Amenities throughout Home

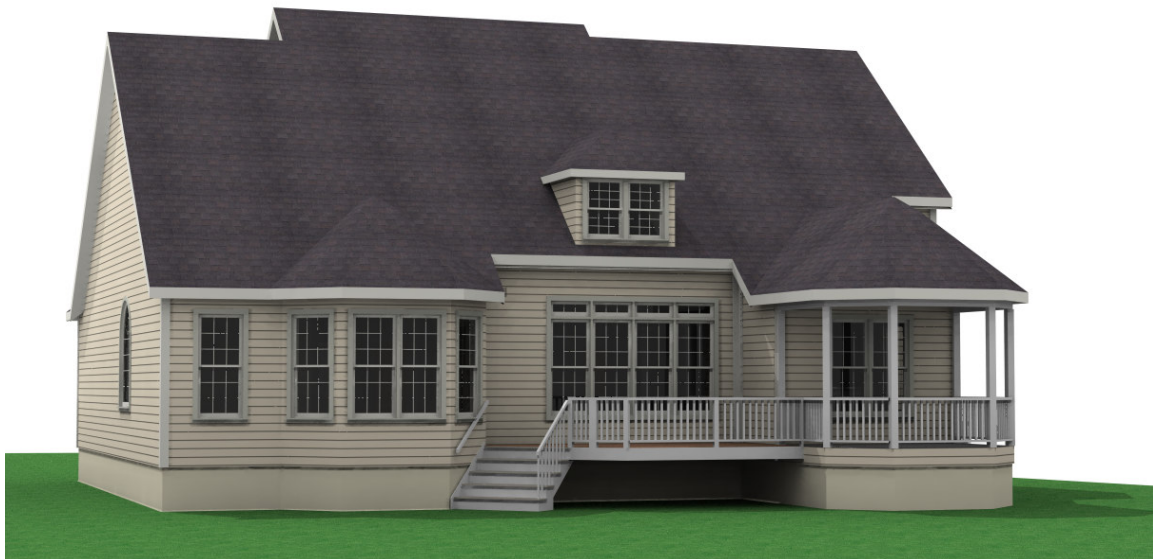
OVERALL

- Modified Frank Betz Plan - "The Windward"
- Approx. 2,800 Sq Ft Heated Space
- Includes Premier Membership
- Pre-construction offering allows you to add custom touches

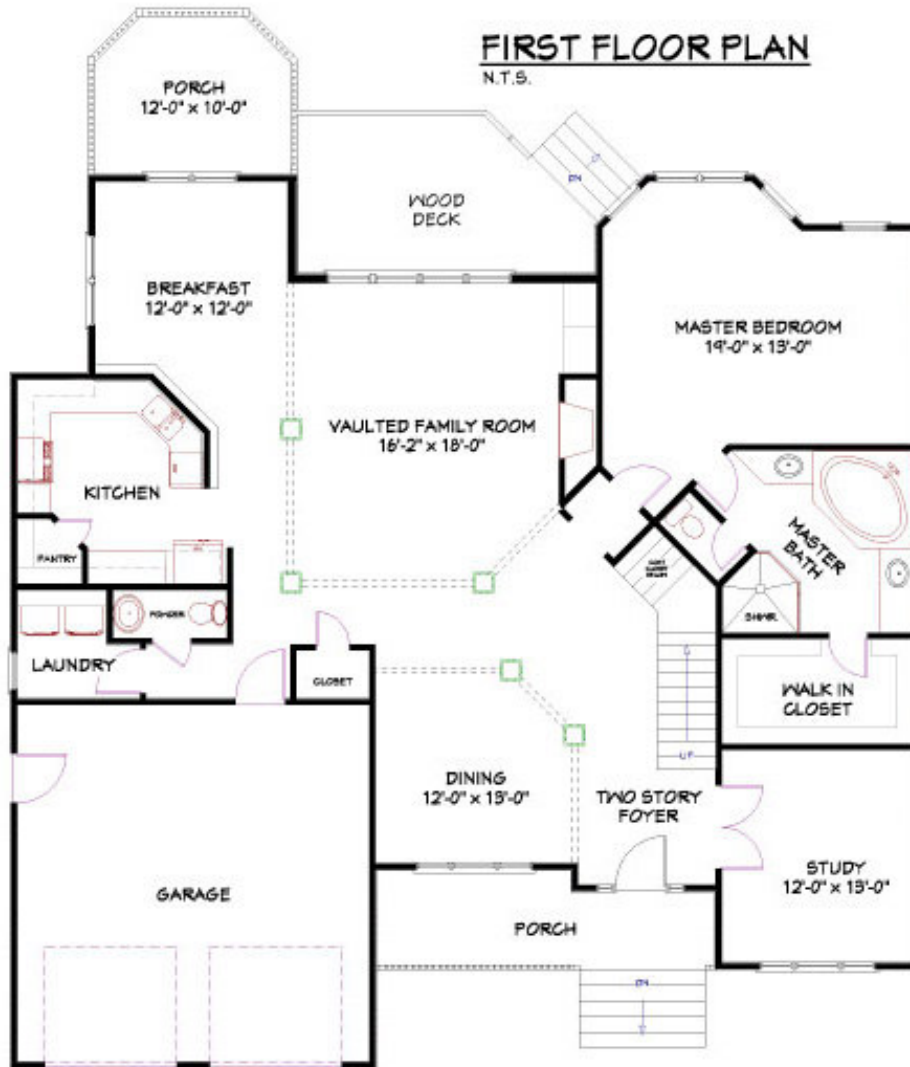
FRONT ELEVATION



REAR ELEVATION



FIRST FLOOR



SECOND FLOOR

